



BRAMFIELD AND THORINGTON PARISH COUNCIL

Karen Lewis, Clerk to the Council
2 St Andrews Close, Walberswick. IP18 6WA
Tel: 07516 798 094



Email: clerk@bramfieldandthoringtonparishcouncil.gov.uk

Bridge Street, Bramfield Highways Report 2025

This is an up-to-date report on behalf of Bramfield and Thorington Parish Council with regard to the ongoing and worsening issues concerning the repeated flooding happening in this street in Bramfield. A report was sent to the County Council, the local M.P. and to our local County and District Councillors in 2023 following the issues caused by storm events in this year. It was reported back to the Parish Council by the Office of Therese Coffey that action would be taken at some point to correct the issues on the highway. No communication has been made with the Parish Council at all. Whilst economic restraints can be appreciated, the issues on Bridge Street have not gone away and are now becoming a regular issue whenever there is a heavy rain event.

Again, we have attached photographs at the end of this document showing the flooding that has occurred throughout 2024 and now into 2025.

The following points should be noted:

- Since the first report in 2023 the number of flooding incidents in Bridge Street have increased. Heavy rain causes water to cascade through the street because of inadequate and blocked drainage. The increased rainfall of 2024 caused repeated floods.
- There are no footpaths on Bridge Street.
- It is a single-track road.
- School children have to walk along the street in order to gain access to the primary school.
- During these flooding events it is difficult to navigate the street by foot with passing cars going through the water. This is clearly a Health and Safety issue.

We have also attached photographs of the condition of the road close to the entry to the drainage ditches when the road is dry. The constant influx of water in the volumes witnessed is causing the road surface to deteriorate. The barriers alongside the drainage ditch are in poor condition and are becoming a safety hazard.

There has been no maintenance of the ditch by Suffolk Highways for many years and now the inadequate drainage pipes are completely blocked. Local residents do their best to ensure

that as many leaves and other debris are removed and that the water is encouraged to go into the ditch as much as possible.

As a Parish Council we would appreciate a site visit from Suffolk Highways with us so that we can explain as fully as possible the issues that the village is enduring, and that some action such as rodding the drainage pipes could at least be explored. The residents are becoming very dissatisfied with the lack of support that they appear to be receiving from the authorities. We as a community, are becoming very concerned about the safety of the school children who have to walk through these flood waters in order to get to and from school. These floods are a regular occurrence and the damage to the road, ditch and the surroundings is a serious matter.

We look forward to hearing from you with regard to this issue as a matter of urgency.

Regards,

Debbie Hughes
Chair,
Bramfield and Thorington parish Council.



03.01.2024



03.01.2024



06.01.2025

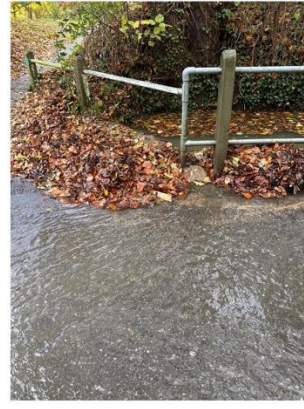


06.01.2025



03.01.2024

**These photographs are taken almost exactly a year apart - spot the difference!
Both of these images are taken on days when the primary school is open. It can
be clearly seen that the ditch is completely blocked and without the actions of
residents then considerably more damage would occur.**



These photographs were taken on the 27th November 2024. This was on a school day at 13.44. These are the conditions that children were expected to walk through when leaving the school at the same time as traffic that normally traverses the road. As can be seen the ditch is completely blocked.



Fig 1



Fig 2



Fig 3



Fig 4



Fig 5



Fig 6



Fig 7



Fig 8

These photographs show the condition of the road once free of floods. As can be seen in all of the images, the road is eroding. The condition of the safety barriers is poor. The foundations for vertical concrete posts in figures 3,4,6,7 and 8 are becoming unstable. The metal horizontal barriers are loose and provide poor support.

